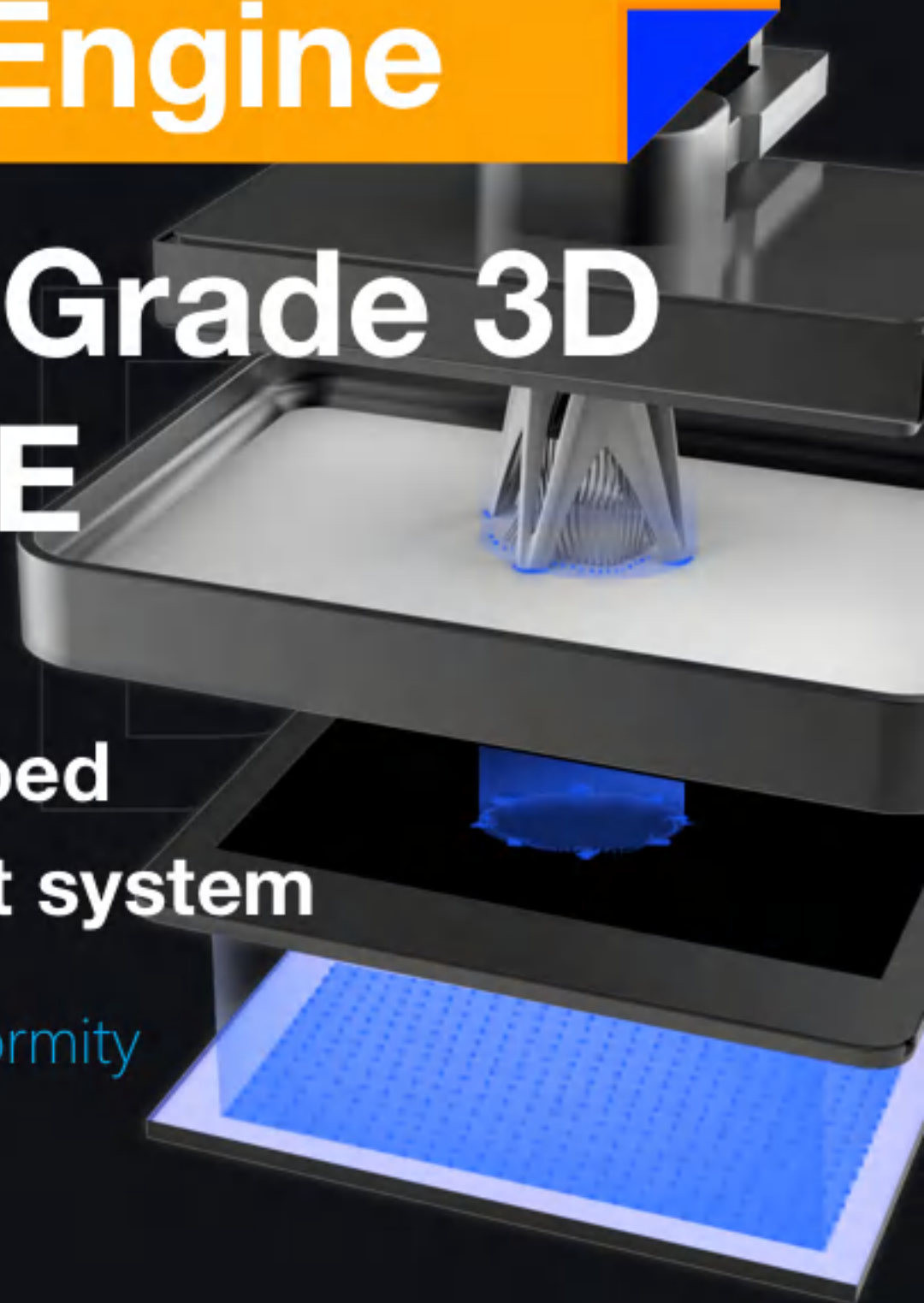


# UNIZ 4th Generation LED Light Engine

## Consumer Grade 3D Printer IBEE

Newest self developed  
LED collimated light system

Higher Collimation and Uniformity





# 8.9 Inch 4K Monochrome Screen

- Higher resolution  
Higher Hardness  
Larger Printing Size

Resolution up to 3840x2400, highlighting every details, providing better printing quality.

2K

4K

8.9"

IBEE



SETTINGS

HOME

POWER

# Faster Printing Speed 80MM/H

Build Volume 192\*120\*220mm

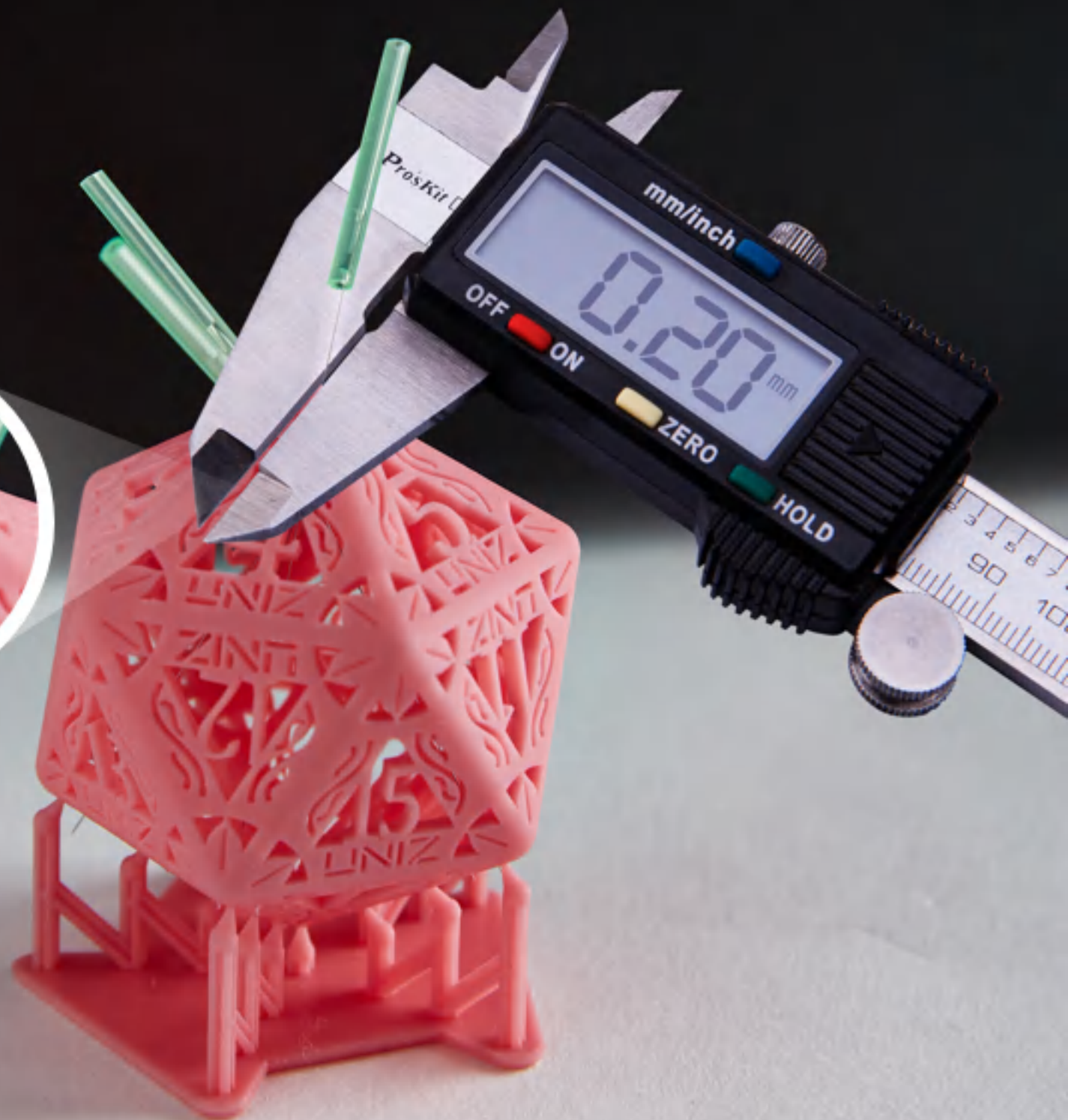


# High Accuracy

## High Accuracy of 0.2mm

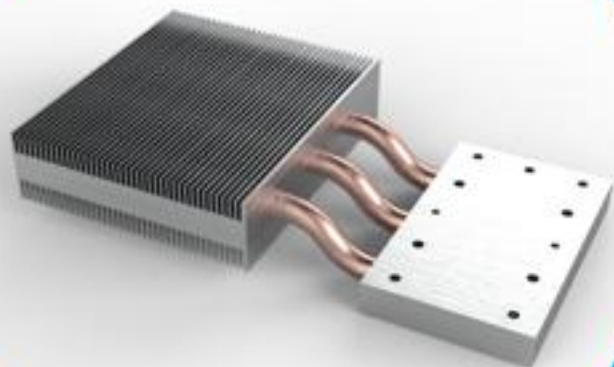
With higher resolution and better light source , IBEE could print minute structure like 0.2mm holes. This picture shows a model with 0.2mm diameter holes inserted by a 0.2mm needle, printed by IBEE.

“0.2mm”

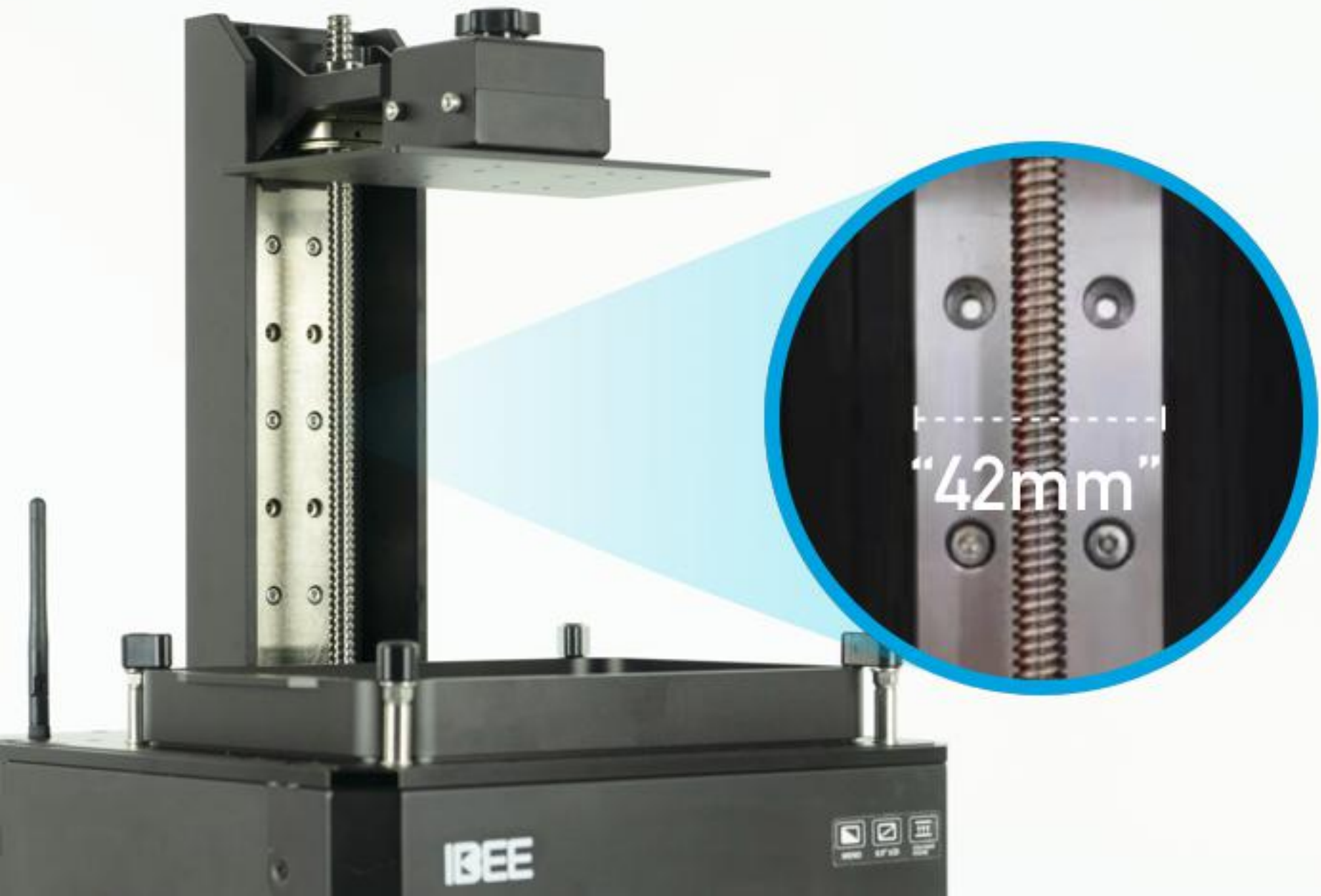


# High Efficiency Cooling System

Professional customized thermotube, providing great heat dissipation.



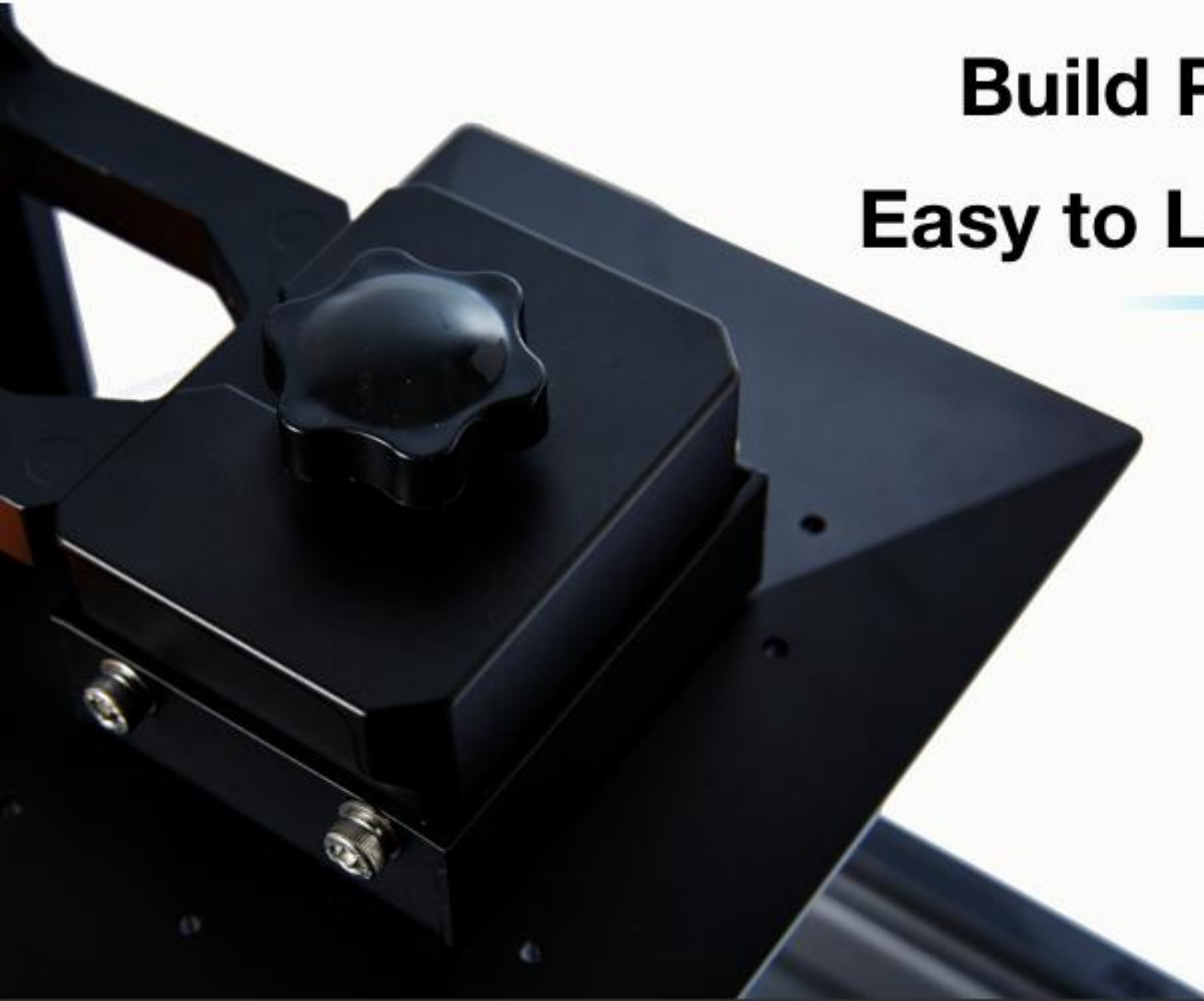
# Thicker and Wider Guide Rail



## Humanized Design

### Build Platform

### Easy to Levelling



#### Economical Release Film

Durable , easy to replace , high quality and inexpensive.



#### Simply Using Resin Tank

Humanize design , fast film replacing great reliability.



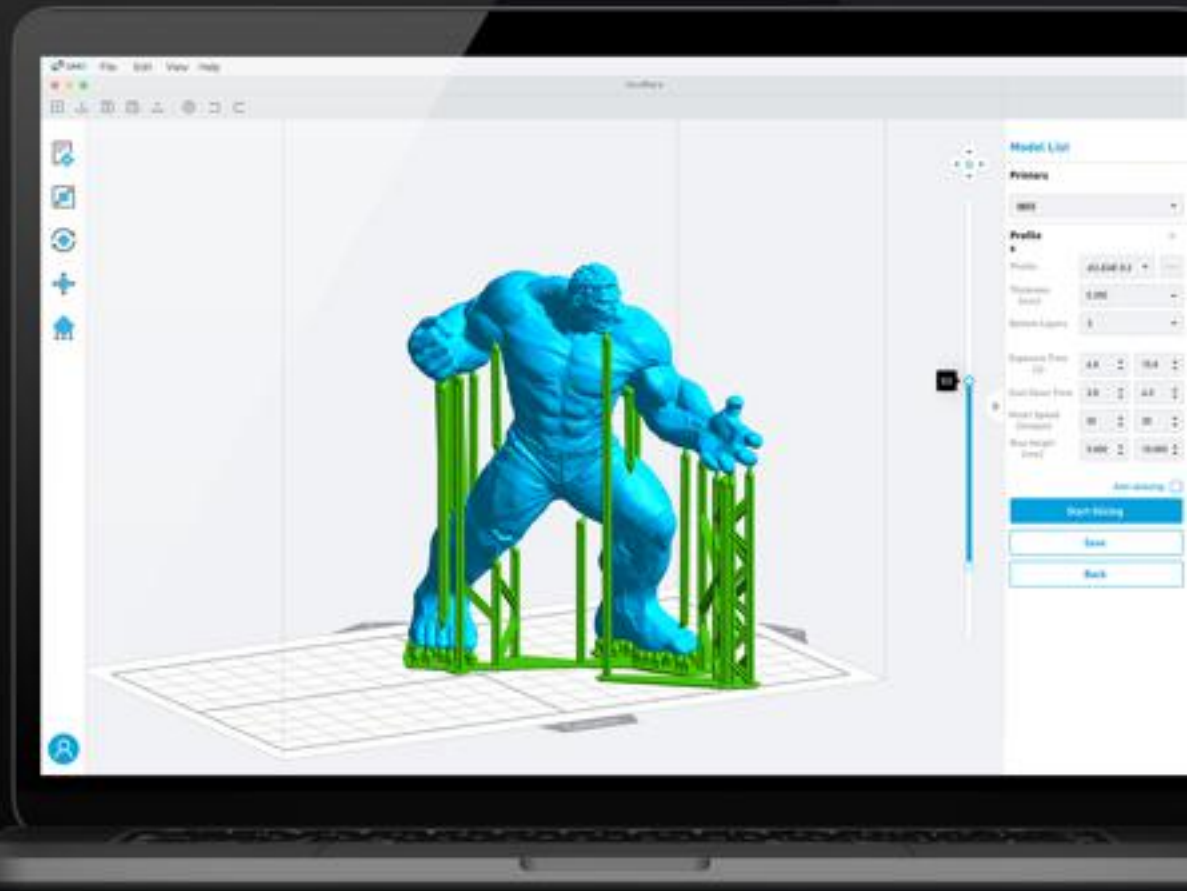
Brand New Slicing Software

**High Speed**

**User Friendly**

**High Intelligence**

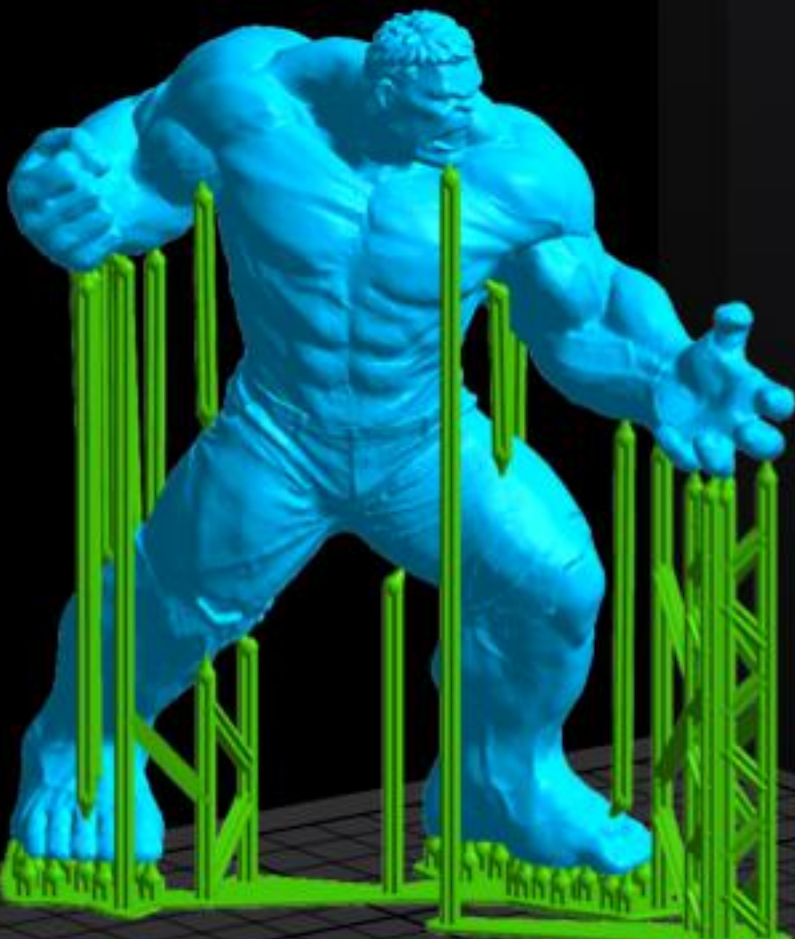
**UNIZMAKER**





# Automatic Support Generate

After placing models, one click to generate supports automatically, easy to use, help you print faster.



**Supports**

**Generate**

**Remove** **Edit**

Lift Height: 0.00

Spacing: 5.70

Diameter: 3.00

Head Length: 3.00

TouchPoint Size: 1.00

Internal  Connection

**ADVANCED**

## Supported import file types



\*STL



\*OBJ



\*SLC



\*AMF



\*3MF

## Supported export file types



\*STL

Model file, with supports



\*ZPRJ

Project file

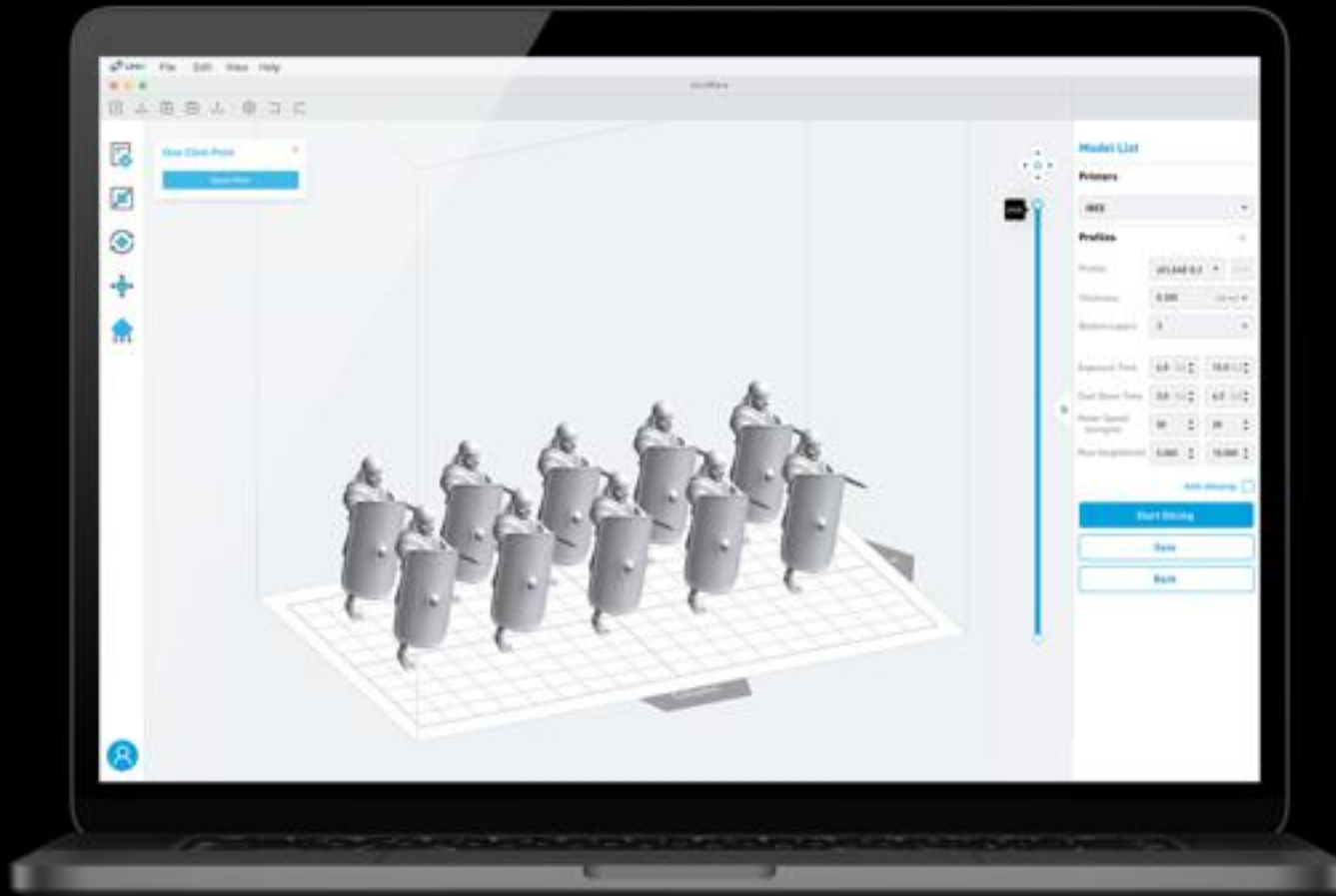


\*ZCODE

Slice file

# One Click Printing

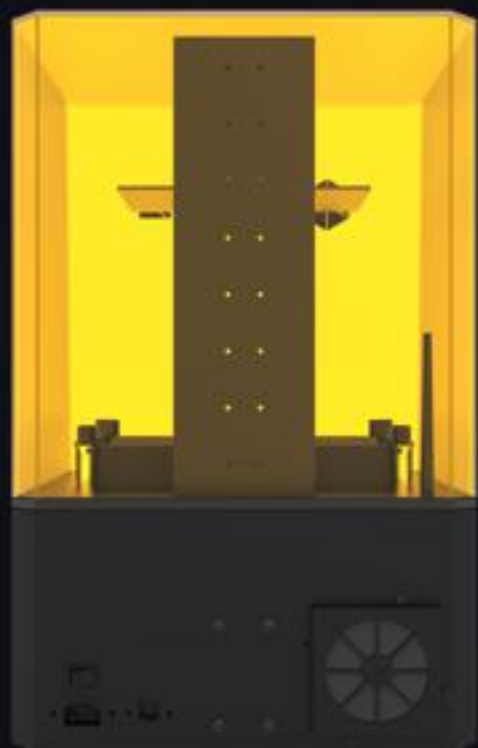
After import models, one click to placing, adding supports, setting print parameters, and slicing.



# Product Details



Front



Back



Side

# IBEE 3D PRINTER

## DESCRIBE

## PARAMETER

|                   | DESCRIBE   | PARAMETER   |
|-------------------|--|---|
| <b>Printing</b>   | Printing Technology  | LCD Stereo lithography  |
|                   | Build Volume   | 192 × 120 × 220mm 7.5" × 4.7" × 8.7"  |
|                   | XY Resolution  | 49.8μm  |
|                   | Highest accuracy<br><small>*Highest accuracy only achievable at integer multiples of smallest pixel sizes.</small> | ±10μm   |
|                   | Layer Thickness(Z resolution)  | 25, 50, 100μm   |
|                   | Separation Mechanism   | Polymer film natural peel   |
|                   | Support  | Uniz smart support technology   |
|                   | Print Speed**<br><small>*Result come from specific speed testing model, others may be different.</small>           | Up to 80mm/h  |
| <b>Hardware</b>   | Dimension/Weight   | 325 × 325 × 510 mm [W×H×D]<br>12.8" ×12.8" × 20", 15.8KG/34.8LB   |
|                   | Operating Temperature  | Suggested 18–28° C/64–82° F   |
|                   | Power Requirement  | 115V/230V, 350W,50-60Hz   |
|                   | Optical System   | 4th Generation Collimated light engine  |
|                   | Mechanical   | Cast Aluminum & CNC, Sheet metal  |
|                   | Connectivity   | Flash drive, Wi-Fi, Ethernet  |
|                   | Control Mode   | 4.3' Touch Screen   |
| <b>Software</b>   | System Requirement   | Windows 7 sp1 and up (64-bit only),<br>Mac OS X 10.7 and up (64-bit only),<br>16GB RAM, OpenGL 2.1, Discrete Graphics |
|                   | Advanced Features  | Built-in advanced model repair<br>Extra large file support (1GB+)   |
|                   | Compatible Format  | STL, OBJ, AMF, 3MF,SLC  |
|                   | Slice Format   | zcode   |
| <b>UNIZ Cloud</b> | Remote Monitoring  | Remote monitor and control of IBEE printer  |
|                   | Multi Devices Management   | Remote management of different IBEE printers  |
|                   | Remote Print Mode  | Transfer slice files through UNIZ Cloud and start printing task.  |

# Example Pho

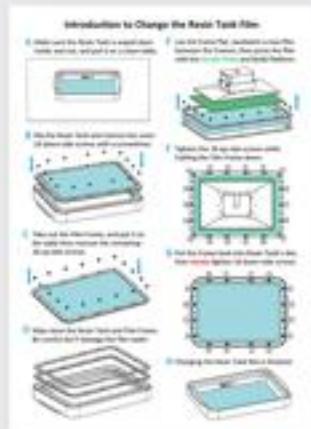
## Example Photos



# Accessories list

| DETAIL PACKING LIST       |                     |     |        |
|---------------------------|---------------------|-----|--------|
| IBEE 3D Printer           |                     |     |        |
| Accessories and Materials |                     |     |        |
| No.                       | Accessories         | Qty | Remark |
| 1                         | IBEE 3D Printer     | 1   |        |
| 2                         | zMUD                | 1   |        |
| 3                         | Release Film        | 5   |        |
| 4                         | Detail Packing List | 1   |        |
| 5                         | Scraping Card       | 5   |        |
| 6                         | Warranty Card       | 1   |        |
| 7                         | Sample Model        | 1   |        |
| 8                         | IBEE 3D Printer     | 1   |        |
| 9                         | IBEE 3D Printer     | 1   |        |
| 10                        | IBEE 3D Printer     | 1   |        |
| 11                        | IBEE 3D Printer     | 1   |        |
| 12                        | IBEE 3D Printer     | 1   |        |
| 13                        | IBEE 3D Printer     | 1   |        |
| 14                        | IBEE 3D Printer     | 1   |        |
| 15                        | IBEE 3D Printer     | 1   |        |
| 16                        | IBEE 3D Printer     | 1   |        |
| 17                        | IBEE 3D Printer     | 1   |        |
| 18                        | IBEE 3D Printer     | 1   |        |
| 19                        | IBEE 3D Printer     | 1   |        |
| 20                        | IBEE 3D Printer     | 1   |        |
| 21                        | IBEE 3D Printer     | 1   |        |
| 22                        | IBEE 3D Printer     | 1   |        |
| 23                        | IBEE 3D Printer     | 1   |        |
| 24                        | IBEE 3D Printer     | 1   |        |
| 25                        | IBEE 3D Printer     | 1   |        |
| 26                        | IBEE 3D Printer     | 1   |        |
| 27                        | IBEE 3D Printer     | 1   |        |
| 28                        | IBEE 3D Printer     | 1   |        |
| 29                        | IBEE 3D Printer     | 1   |        |
| 30                        | IBEE 3D Printer     | 1   |        |
| 31                        | IBEE 3D Printer     | 1   |        |
| 32                        | IBEE 3D Printer     | 1   |        |
| 33                        | IBEE 3D Printer     | 1   |        |
| 34                        | IBEE 3D Printer     | 1   |        |
| 35                        | IBEE 3D Printer     | 1   |        |
| 36                        | IBEE 3D Printer     | 1   |        |
| 37                        | IBEE 3D Printer     | 1   |        |
| 38                        | IBEE 3D Printer     | 1   |        |
| 39                        | IBEE 3D Printer     | 1   |        |
| 40                        | IBEE 3D Printer     | 1   |        |
| 41                        | IBEE 3D Printer     | 1   |        |
| 42                        | IBEE 3D Printer     | 1   |        |
| 43                        | IBEE 3D Printer     | 1   |        |
| 44                        | IBEE 3D Printer     | 1   |        |
| 45                        | IBEE 3D Printer     | 1   |        |
| 46                        | IBEE 3D Printer     | 1   |        |
| 47                        | IBEE 3D Printer     | 1   |        |
| 48                        | IBEE 3D Printer     | 1   |        |
| 49                        | IBEE 3D Printer     | 1   |        |
| 50                        | IBEE 3D Printer     | 1   |        |

Detail Packing List x1



Film Replacing Guide x1



User Manual x1

